



Engineering Submittal Form – MX-14SA8

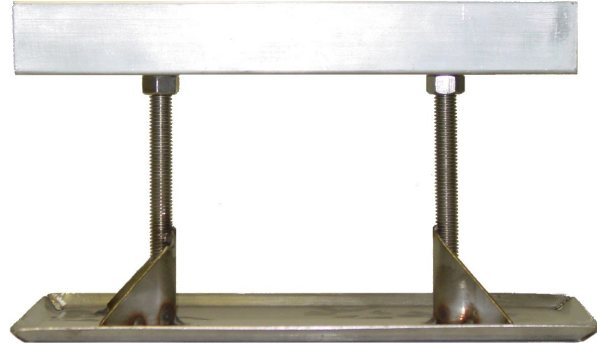
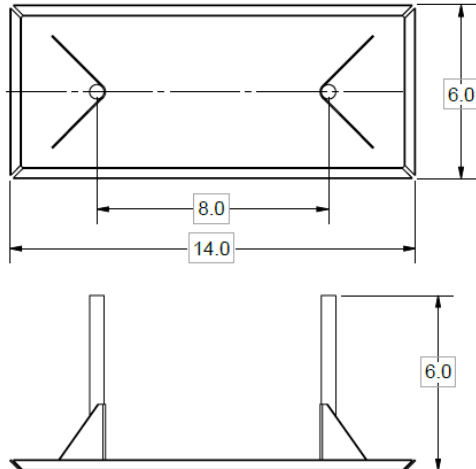
CERTIFIED FOR:

Job Name:

Customer Name:

Location:

Customer P.O.:



MX-14SA8

Recommended Usage:

Use as a free standing; non-penetrating pipe support stand for all piping applications installed on single ply and built-up roofs within the recommended weight limit. This support is designed to accommodate single or multiple runs of conduit not exceeding weight load of 252lbs.

MAPA Products Supports are designed and manufactured in accordance with MSS SP-58-2002 and MSS SP-69-2002.

Refer to MAPA Products "Recommended Installation Guidelines" for standard installation and spacing recommendations.

Composition:

Strut Assembly	12" – 1 5/8" Aluminum Shallow Strut
Threaded Rod Assembly	1/2" X 8" Grade 304 SS ATR
Maximum Adjustability	4" – 8"
Base Dimensions	6" X 14"
Footprint	84 sq in.
Weight Limit	252 lbs

** When used for conduit; specific consideration should be given to the size and number of conduits and the supports recommended weight limit so that maximum support load is not exceeded.*

Optional Accessories:

- MWP1018 - 9.2mm rubber walk pad
- Snap-N-Strut Clamps (Refer to SNS selection chart for sizing)

Certification Data						
Support Pad Options						
QTY	NP	WP	Pipe Size	Service	SNS Selection	Notes & Options
	<input type="checkbox"/>	<input type="checkbox"/>				
	<input type="checkbox"/>	<input type="checkbox"/>				

DRAWN	CHECKED	DATE	DWG.NO.
--------------	----------------	-------------	----------------

Doc. #: M-13818