



## Engineering Submittal Form – MX-14SA14

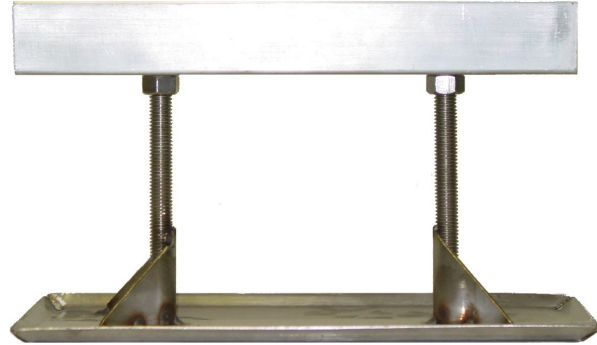
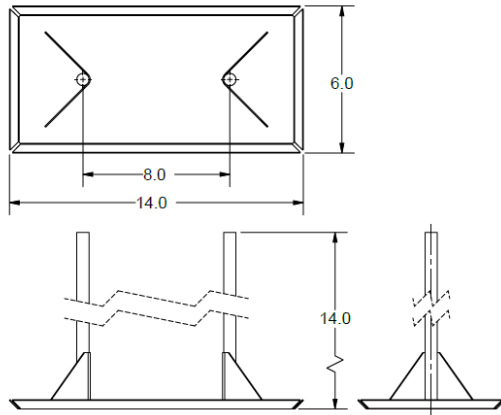
### CERTIFIED FOR:

Job Name:

Customer Name:

Location:

Customer P.O.:



**MX-14SA14**

### Recommended Usage:

Use as a free standing; non-penetrating pipe support stand for all piping applications installed on single ply and built-up roofs within the recommended weight limit. This support is designed to accommodate single or multiple runs of conduit not exceeding weight load of 252lbs.

**MAPA Products Supports are designed and manufactured in accordance with MSS SP-58-2002 and MSS SP-69-2002.**

Refer to MAPA Products "Recommended Installation Guidelines" for standard installation and spacing recommendations.

### Composition:

Strut Assembly	12" – 1 5/8" Aluminum Shallow Strut
Threaded Rod Assembly	1/2" X 14" Grade 304 SS ATR
Maximum Adjustability	4" – 14"
Base Dimensions	6" X 14"
Footprint	84 sq in.
Weight Limit	252 lbs

*\* When used for conduit; specific consideration should be given to the size and number of conduits and the supports recommended weight limit so that maximum support load is not exceeded.*

### Optional Accessories:

- MWP1018 - 9.2mm rubber walk pad
- Snap-N-Strut Clamps (Refer to SNS selection chart for sizing)

### Certification Data

#### Support Pad Options

QTY	NP	WP	Pipe Size	Service	SNS Selection	Notes & Options
	<input type="checkbox"/>	<input type="checkbox"/>				
	<input type="checkbox"/>	<input type="checkbox"/>				

**DRAWN**

**CHECKED**

**DATE**

**DWG.NO.**

Doc. #: M-13818