



Engineering Submittal Form

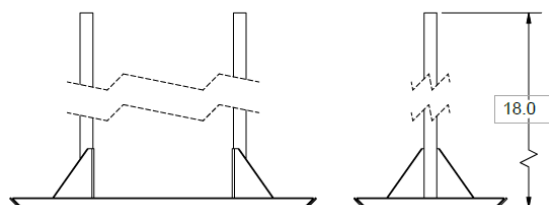
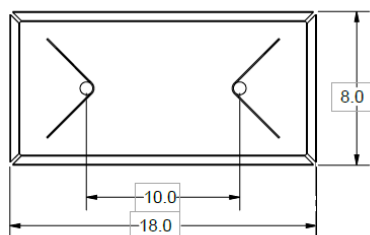
CERTIFIED FOR:

Job Name:

Customer Name:

Location:

Customer P.O.:



MX-18SA18

Recommended Usage:

Use as a free standing; non-penetrating pipe support stand for all piping applications installed on single ply and built-up roofs within the recommended weight limit. This support is designed to accommodate single or multiple runs of conduit not exceeding weight load of 432lbs.

MAPA Products Supports are designed and manufactured in accordance with MSS SP-58-2002 and MSS SP-69-2002.

Refer to MAPA Products "Recommended Installation Guidelines" for standard installation and spacing recommendations.

Composition:

Strut Assembly 18" – 1 5/8" Aluminum Heavy Duty Strut

Base 8" X 18" 304 SS

Threaded Rod Assembly 1/2" X 18" 304 SS ATR

Maximum Adjustability 4 1/2" to 18"

Footprint 144 sq in.

Weight Limit 432 lbs

Typical Pipe & Size Single or Multiple EMT/Rigid Conduit

** When used for conduit; specific consideration should be given to the size and number of conduits and the supports recommended weight limit so that maximum support load is not exceeded.*

Optional Accessories:

▪ MWP 1222 – 9.2mm thick rubber walk pad.

▪ Snap-N-Strut Clamps (Refer to SNS selection chart for sizing)

Certification Data

Support Pad Options							
QTY	NP	P	WP	Pipe Strap	Pipe Size	Service	Notes & Options
	<input type="checkbox"/>	NA	<input type="checkbox"/>	<input type="checkbox"/>			
	<input type="checkbox"/>	NA	<input type="checkbox"/>	<input type="checkbox"/>			

Doc. #: M-13823