



Engineering Submittal Form

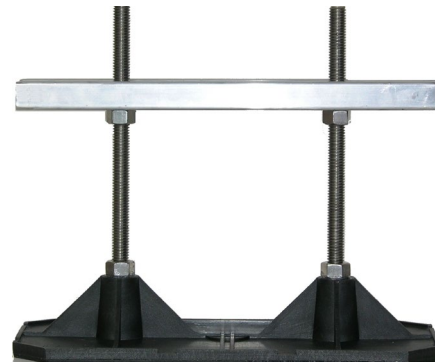
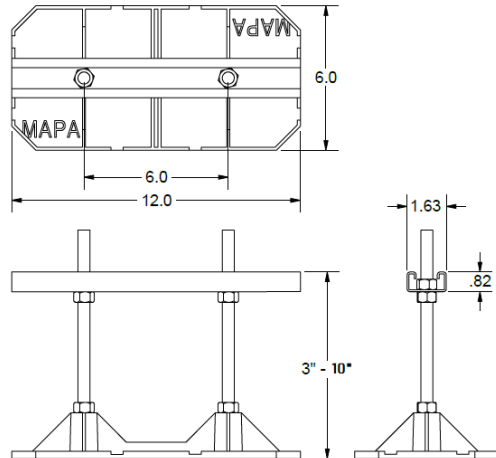
CERTIFIED FOR:

Job Name:

Customer Name:

Location:

Customer P.O.:



MS-12SA10

Recommended Usage:

Use as a free standing, non-penetrating adjustable low-profile, light to medium duty pipe support for piping installed on single ply or built-up roofs. For 2" or Larger Condensates / Single or Multiple EMT/Rigid Conduit with weight load not to exceed 216lbs.

MAPA Products Supports are designed and manufactured in accordance with MSS SP-58-2002 and MSS SP-69-2002.

Refer to MAPA Products "Recommended Installation Guidelines" for standard installation and spacing recommendations.

Composition:

Strut Assembly	12" – 1 5/8" Aluminum Shallow Strut
Base	UV Protected Nylon 6" X 12"
Threaded Rod Assembly	1/2" X 10" 304 SS ATR
Maximum Adjustability	3" to 10"
Footprint	72 sq in.
Weight Limit	216 lbs
Typical Pipe & Size	2" or Larger Condensates / Single or Multiple EMT/Rigid Conduit
Suffix "P"	Integrated 1/8" Isolation Pad

Optional Accessories:

- MWP 1016 – 9.2mm thick rubber walk pad.
- Snap-N-Strut Clamps (Refer to SNS selection chart for sizing)

Certification Data							
Support Pad Options							
QTY	NP	P	WP	Pipe Strap	Pipe Size	Service	Notes & Options
	<input type="checkbox"/>	<input type="checkbox"/>	<input type="checkbox"/>	<input type="checkbox"/>			
	<input type="checkbox"/>	<input type="checkbox"/>	<input type="checkbox"/>	<input type="checkbox"/>			

Doc. #: M-13810