



Engineering Submittal Form

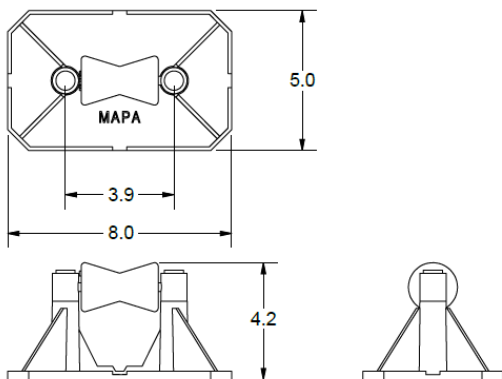
CERTIFIED FOR:

Job Name:

Customer Name:

Location:

Customer P.O.:



MT-2RF4

Recommended Usage:

Use as a free standing, non-penetrating adjustable low-profile, light to medium duty pipe support for piping installed on single ply or built-up roofs. For 2" IPS Pipe Size with weight load not to exceed 110lbs.

MAPA Products Supports are designed and manufactured in accordance with MSS SP-58-2002 and MSS SP-69-2002.

Refer to MAPA Products "Recommended Installation Guidelines" for standard installation and spacing recommendations.

Composition:

Roller Assembly	304 SS Collars & Shaft / SS ATR / UV Protected SBR Rubber Roller
Base	UV Protected Nylon 5" X 8"
Rod Assembly	NA
Maximum Adjustability	Fixed
Footprint	40 sq in.
Weight Limit	120 lbs
Typical Pipe & Size	Single 2" Sch. 40 or smaller Natural Gas
Suffix "P"	Integrated 1/8" Isolation Pad

Optional Accessories:

- MWP 812 – 9.2mm thick rubber walk pad.
- MPS-11 - 1" X 11" -Stainless steel pipe strap.

Certification Data

Support Pad Options							
QTY	NP	P	WP	Pipe Strap	Pipe Size	Service	Notes & Options
	<input type="checkbox"/>	<input type="checkbox"/>	<input type="checkbox"/>	<input type="checkbox"/>			
	<input type="checkbox"/>	<input type="checkbox"/>	<input type="checkbox"/>	<input type="checkbox"/>			

Doc. #: M-13614